

# Glass Filler Plumbing Kit For Part Number LK109A

## Warning

To avoid risk of electrical shock, personal injury or death, disconnect from electrical power supply and shutoff water supply before installing this plumbing kit.

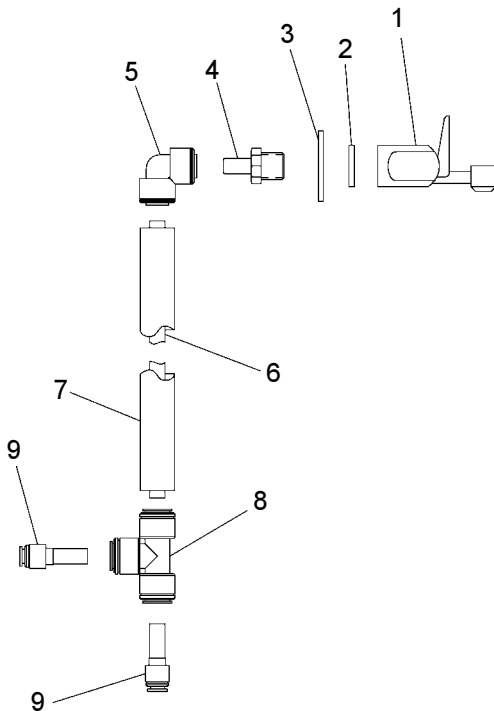
## Caution

To avoid property damage, personal injury and voiding your warranty:

- Have this kit installed by an authorized person. (Installation person should be familiar with water cooler plumbing, refrigeration systems and general plumbing practices.)
- Make sure you read, understand and follow the instructions.
- Wear hand and arm protection. Use caution when working inside the water cooler. Edges inside the water cooler can be sharp.
- Wear eye safety goggles.

## Parts List

Refer to the illustration to make sure you receive all plumbing kit parts. If any parts are missing contact your distributor.

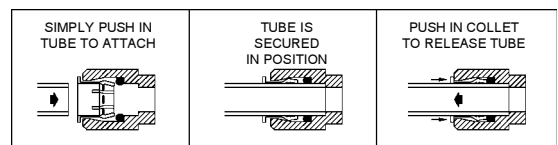


ITEM NO.	PART NO.	DESCRIPTION
1	40493C	Glass Filler
2	100322740560	Black Gasket - Included with Item 1
3	72460042	Metal Washer
4	72460102	Adaptor - 3/8"
5	70896C	Elbow - 3/8"
6	60552C	Copper Tubing - 36"
7	101461040560	Armaflex
8	70852C	Tee - 3/8"
9	72460104	Reducer - 3/8" To 1/4"

## Actuation of Quick Connect Water Fittings:

To remove tubing from the fitting, relieve water pressure, push in on the darker gray collar before pulling on the tubing. To insert tubing, push tube straight into fitting until it reaches a positive stop, approximately 3/4" (19mm). Deburr cut tube ends before inserting into the Quick Connect Fitting. Burrs on the tube end will cut the internal "O"-Ring and will allow the fitting to leak.

## OPERATION OF QUICK CONNECT FITTINGS



PUSHING TUBE IN BEFORE PULLING IT OUT HELPS TO RELEASE TUBE

FOR PARTS, CONTACT YOUR LOCAL DISTRIBUTOR CALL 1.800.323.0620  
ELKAY MANUFACTURING COMPANY • 2222 CAMDEN COURT • OAK BROOK, IL 60523 • 630.574.8484