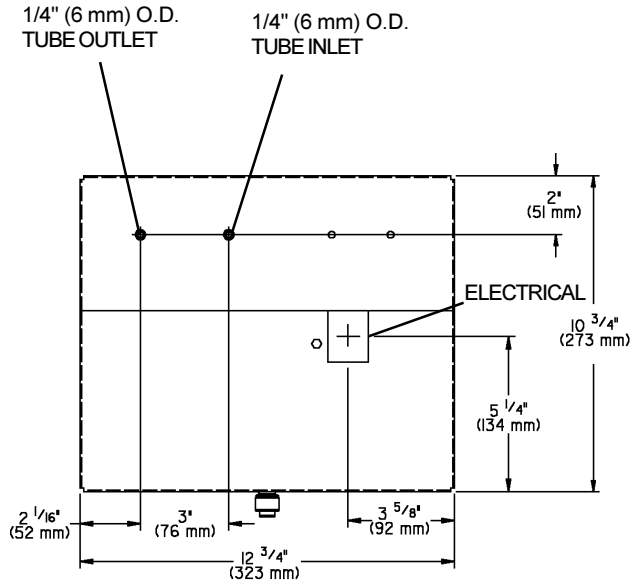


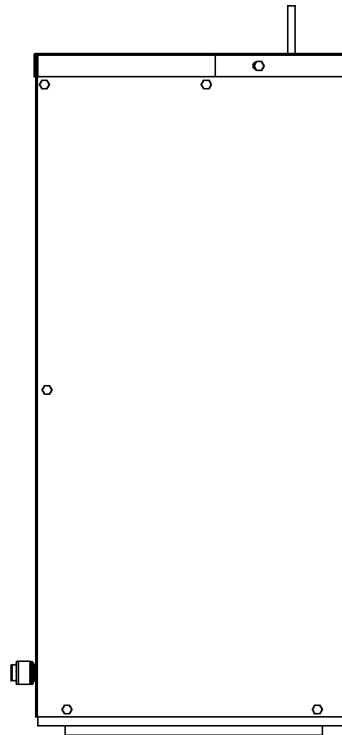
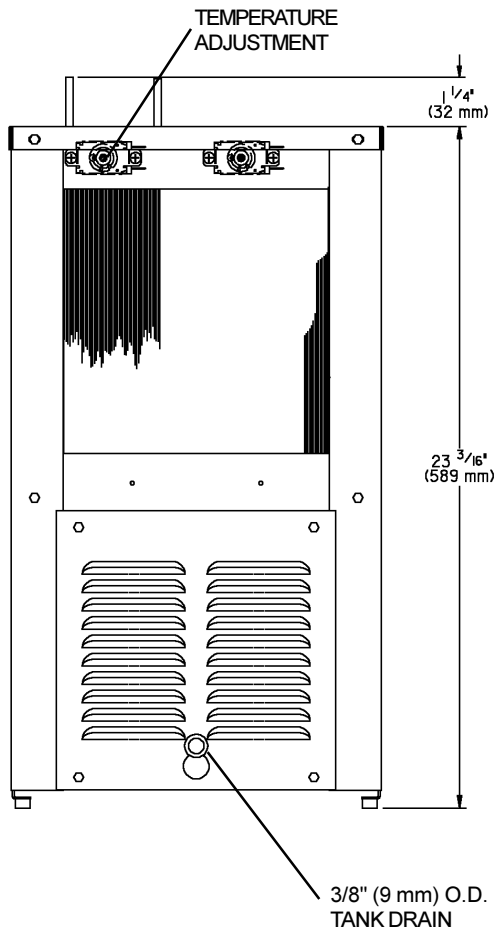
Installation Instructions

ERC8-1B/2B, TRC8-1B/2B Refrigeration Packages



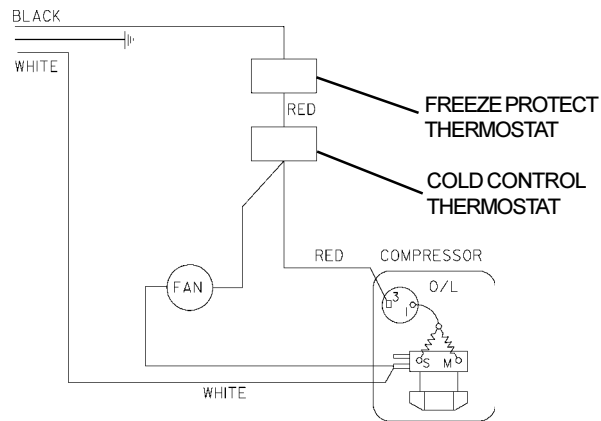
NOTE: It is important to insure proper ventilation. Allow a minimum clearance of 6 inches (152 mm) in front and 3 inches (76mm) in the rear of the unit. If unit is to be installed in an enclosure, allow the following clearances around unit - 1 inch (25mm) each side, 3 inches (76mm) in the rear, 3 inches (76mm) inches above wall.

This chiller has been designed for use with potable water and includes an o-ring seal on the drain plug. This fitting should be replaced if the unit is to be used with more aggressive fluids.



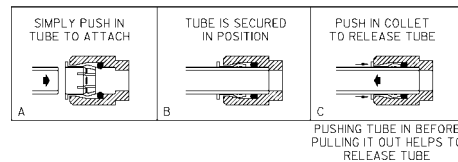
ERC8-1B/2B, TRC8-1B/2B

ITEMIZED PARTS LIST		
ITEM NO.	PART NO.	DESCRIPTION
1	23027C	Cover - Electrical
2	31513C	Control - Cold
3	31513C	Control - freeze prot.
4	191550951550	Fan Motor
5	31475C	Fan Blade
6	20282C	Fan Bracket
7	70018C	Fan Nut
8	70091C	Washer - Fan Blade
9	70009C	Screw - Motor Mounting
10	66305C	Condenser
11	50189C	Shroud
12	66202C	Drier
13	66267C	Heat Exchanger
14*	35807C	Compressor serv Pak (115v)
15	35801C	Relay
16	35795C	Overload
17	30180C	Overload Spring
18	30181C	Terminal Cover
19	30182C	Bale Strap
20	50076C	Sound Dampner
21	100806740570	Grommet
22	19037000	Clip - Compressor Mtg.
23	101516143550	Stud - Compressor Mtg.
24	66455C	Evaporator Assy
25	23025C	Panel - Front
26	70772C	Drain Plug
27	23033C	Panel - Side Right Hand
28	23034C	Panel - Side left Hand
29	23036C	Air Deflector
30	23037C	Electrical Compartment
31	23031C	Bracket - Evap. Locating
NS	23026C	Panel - Rear
NS	23028C	Cover - Top



WIRING DIAGRAM

OPERATION OF QUICK CONNECT FITTINGS



ERC8-2B, TRC8-2B - 220/240V, 50 HZ

ITEM NO.	PART NO.	DESCRIPTION
4	191555551550	Fan Motor
13	66476C	Heat Exchanger
14*	35809C	Compressor Serv Pak
15	35802C	Relay
16	35796C	Overload

*INCLUDES RELAY & OVERLOAD. IF UNDER WARRANTY, REPLACE WITH SAME COMPRESSOR USED IN ORIGINAL ASSEMBLY.

NOTE: All correspondence pertaining to any of the above water cooler or orders for repair parts MUST include model number and serial number of cooler, name and part number of replacement part.

INSTALLATION

- It is important to insure proper ventilation. For remote installation a minimum clearance of 6 inches (152 mm) to the front must be maintained, 1 inch (25 mm) each side, 3 inches (76 mm) to the rear above the unit. Wall grille EG-1 or EG-2 to be used when unit is inserted into an enclosure. Install unit as close as possible to wall grille a 6 inch (152 mm) clearance beyond the front of the wall grille is required for adequate air circulation.
- Water inlet is 1/4" (6 mm) O.D. tube. Contractor to supply connections as required.
- Connecting lines to be of copper, thoroughly flushed to remove all foreign matter before being connected to cooler. If flushing does not remove all particles, a water strainer should be installed in supply line
- Connect cooler to building supply line with a shut-off valve and install a union connection between the valve and cooler
- Electrical: Make sure power supply is identical in voltage, cycle, and phase to that specified on cooler serial plate. Never wire compressor directly to the power supply.

START-UP

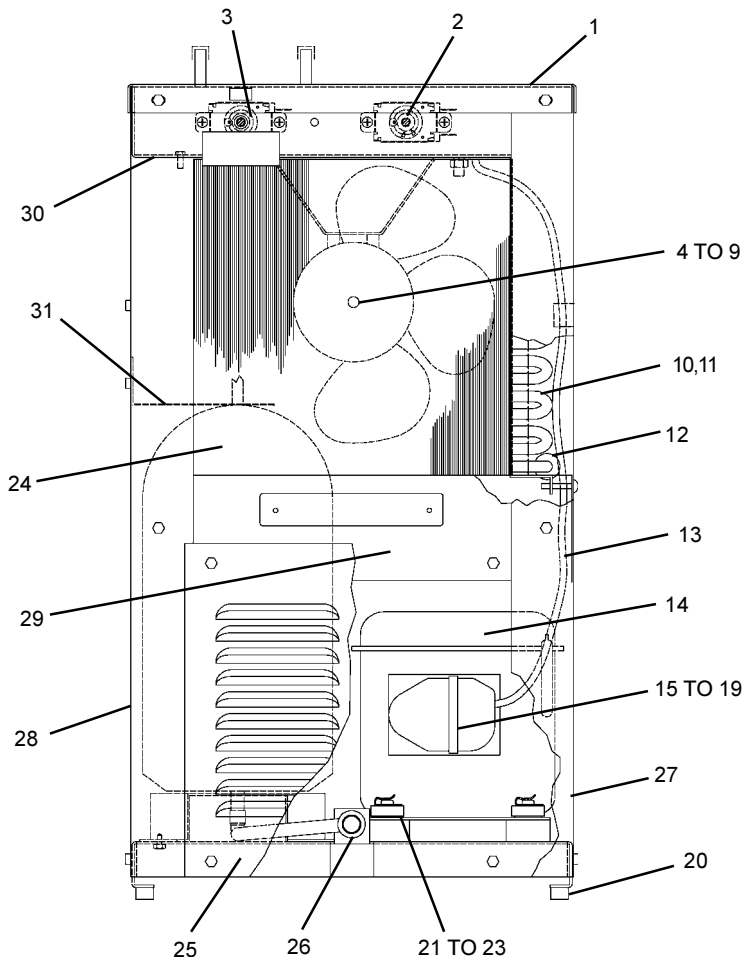
- Open supply line valve.
- Purge air from all water lines by operating bubbler valve of fountain to which cooler is connected. Steady stream assures all air removed.
- Rotate fan to insure proper clearance and free fan action.
- Connect to electrical power.

TROUBLE SHOOTING & MAINTENANCE

Temperature Control: Factory set at 50°F (+/- 5°) under normal conditions. For colder water, adjust screw on item no. 3 CW.

Ventilation: Cabinet louvers and condenser fins should be periodically cleaned with brush, air hose or vacuum cleaner. Excess dirt or poor ventilation can cause no cold water and compressor cycling on the compressor overload protector.

Lubrication: Motors are lifetime lubricated.



ELKAY MANUFACTURING COMPANY - 2222 CAMDEN COURT - OAK BROOK, IL 60523 - 630.574.8484
FOR PARTS, CONTACT YOUR LOCAL DISTRIBUTOR OR CALL 1.800.323.0620