

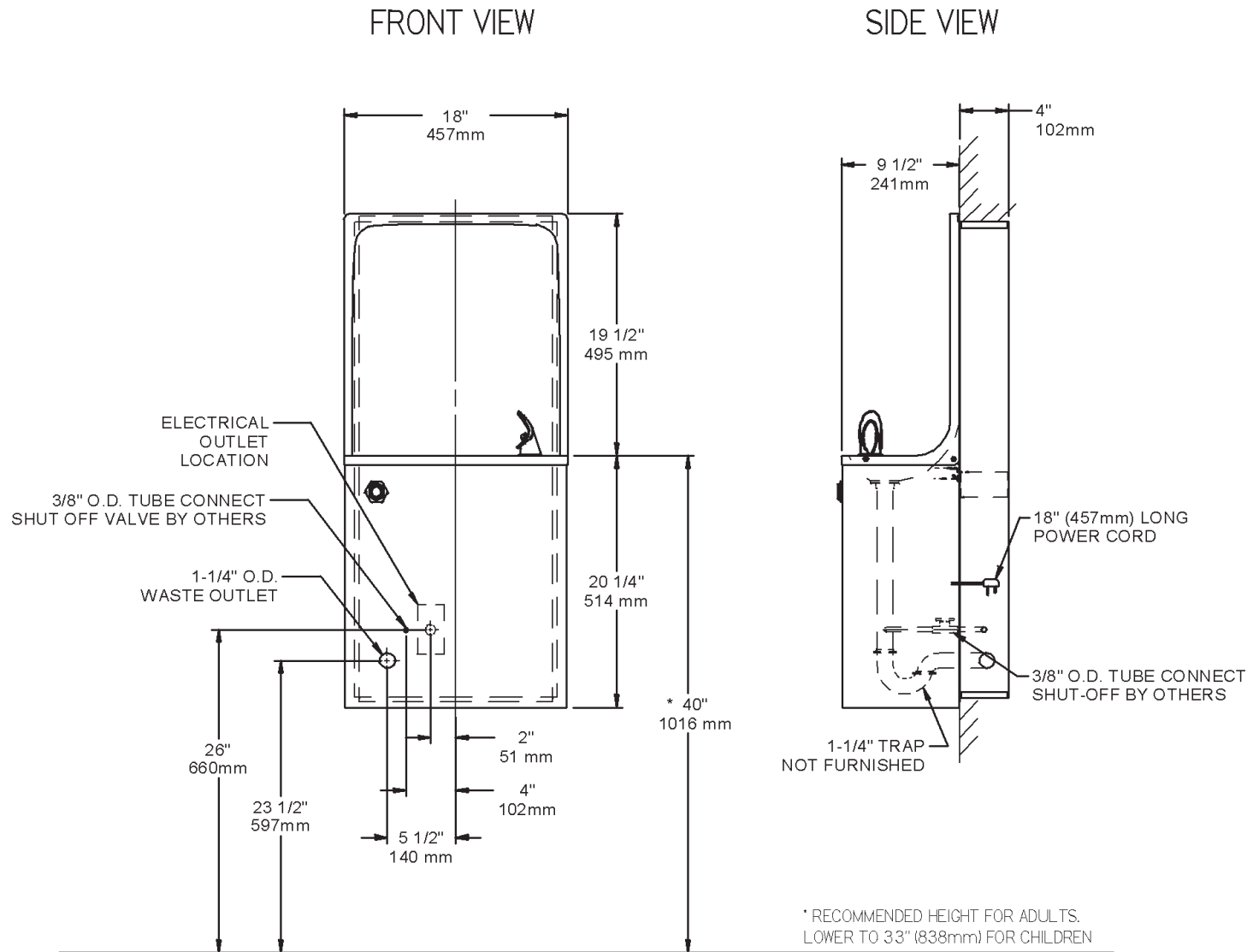
ESRC Semi-Recessed Cooler to ESWA Simulated Recess Cooler Conversion



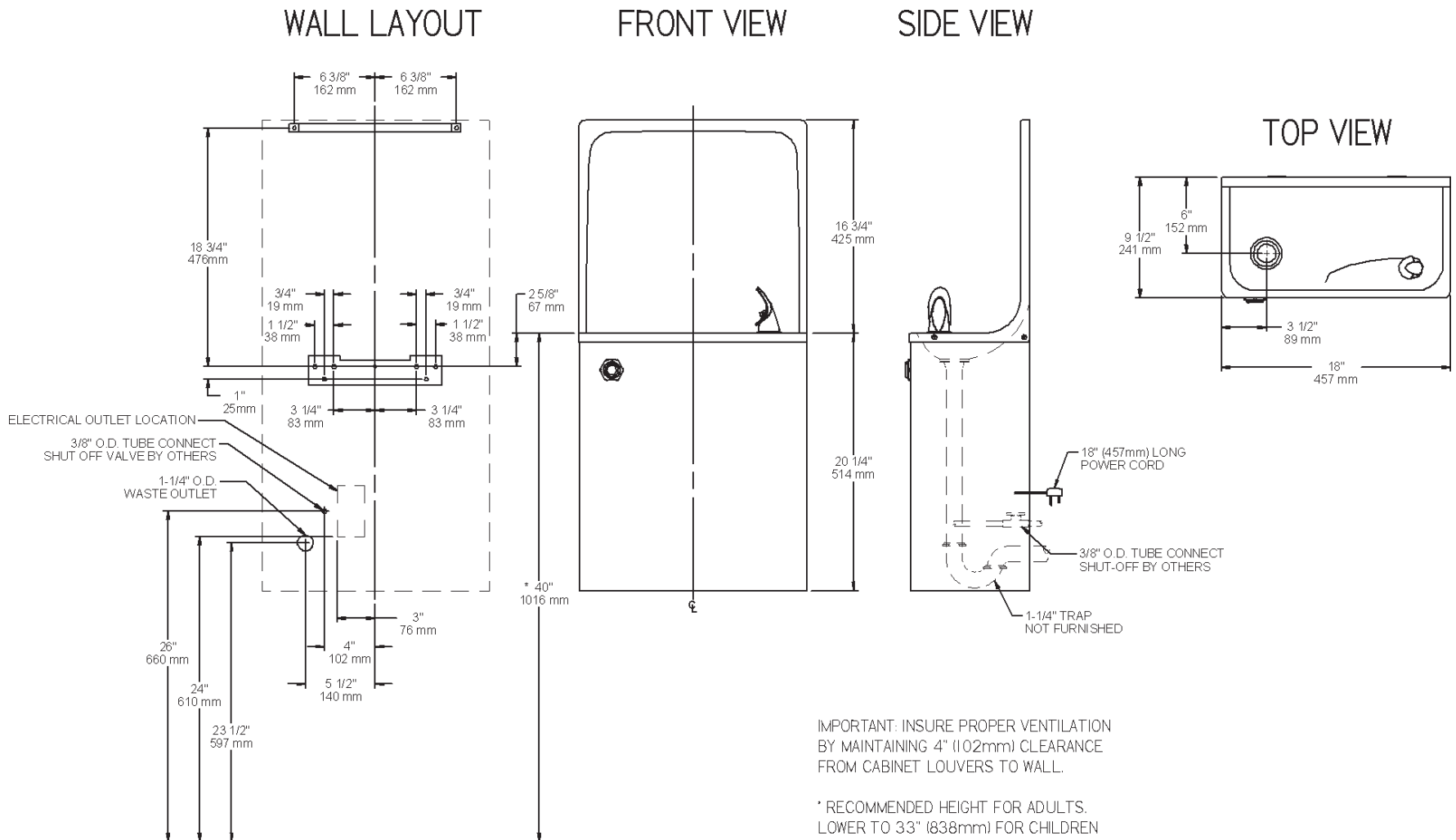
Overview

- These instructions provide information on replacing Elkay *Discontinued* ESRC Semi-Recessed Series Coolers with the ESWA Simulated Recess Coolers.
 - Note: Depending on the locations and methods used for the original installation of the ESRC Cooler, some relocation of the original plumbing and the wall support system may be required.
- Review the cooler installation details to determine the level of changes required.
- Additional information is available at: www.elkayusa.com

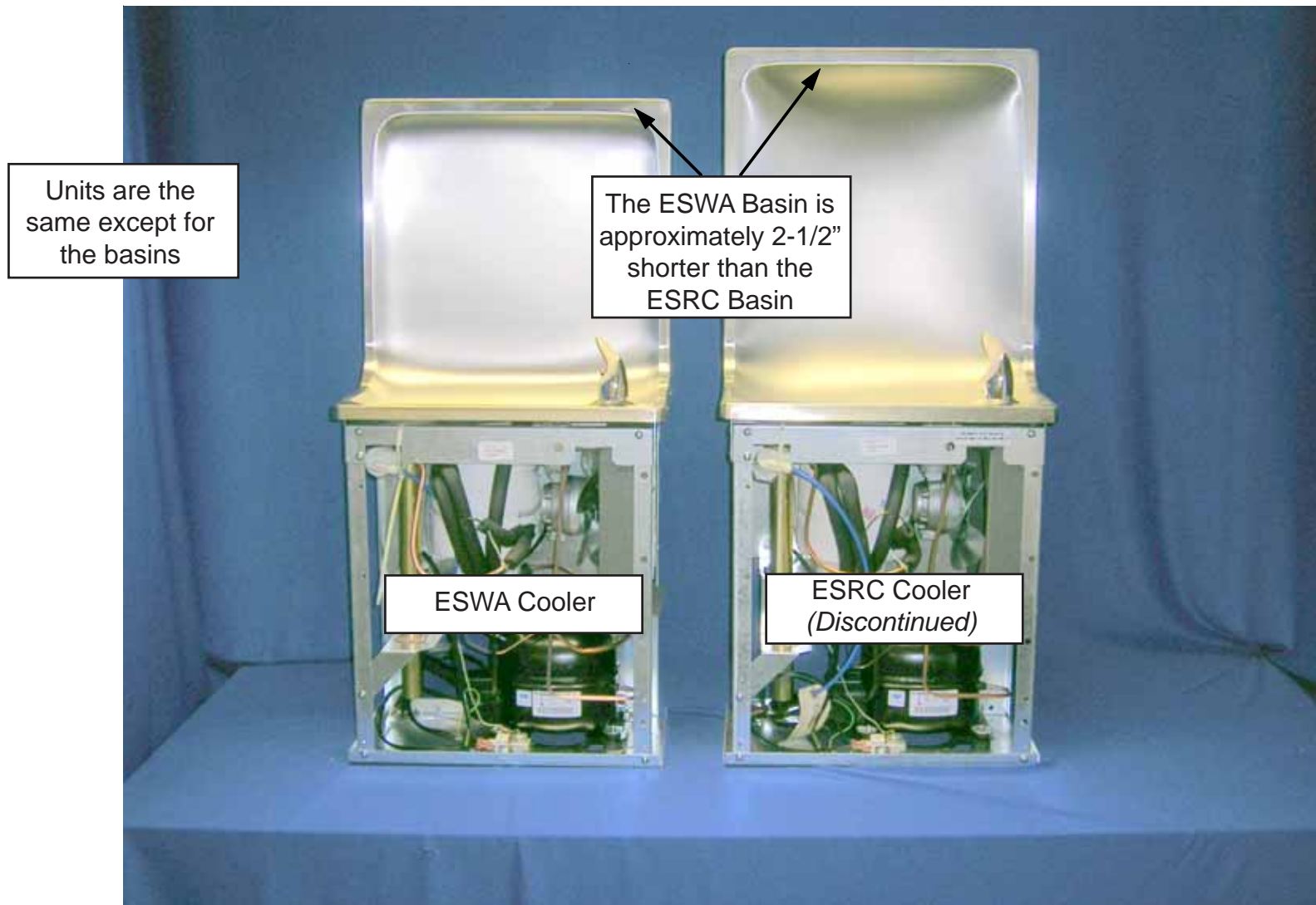
(Discontinued) ESRC Series Cooler Rough-in Details



(Replacement) ESWA Series Cooler Rough-in Details



ESRC / ESWA Details



ESRC / ESWA Details

Units are the same except for the basins

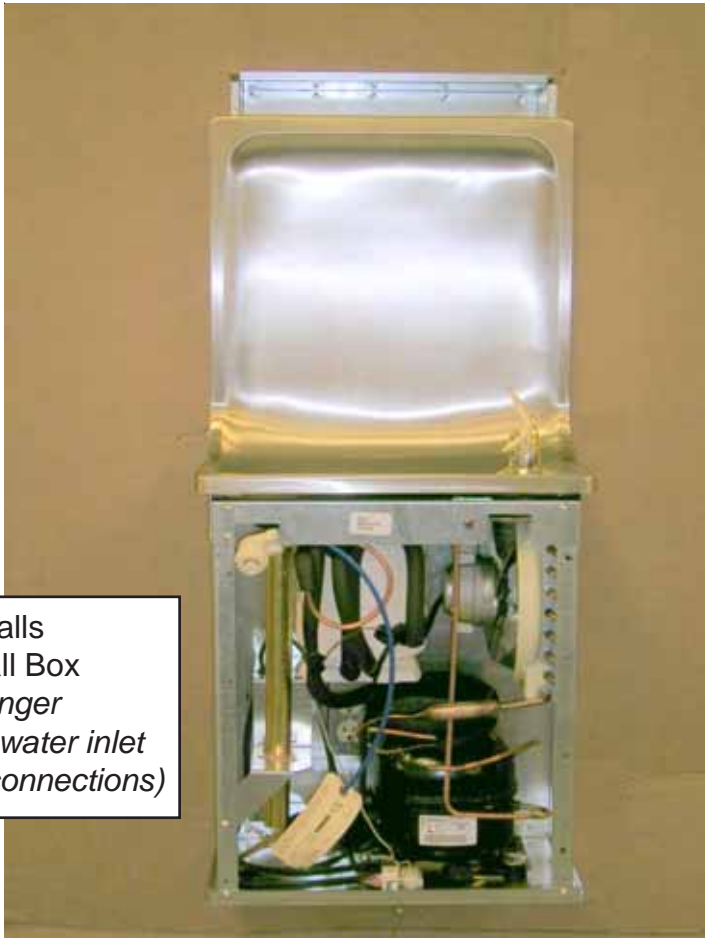


ESRC / ESWA Details

ESRC Wall Box



ESWA unit installs onto ESRC Wall Box (uses same hanger bracket, drain, water inlet and electrical connections)

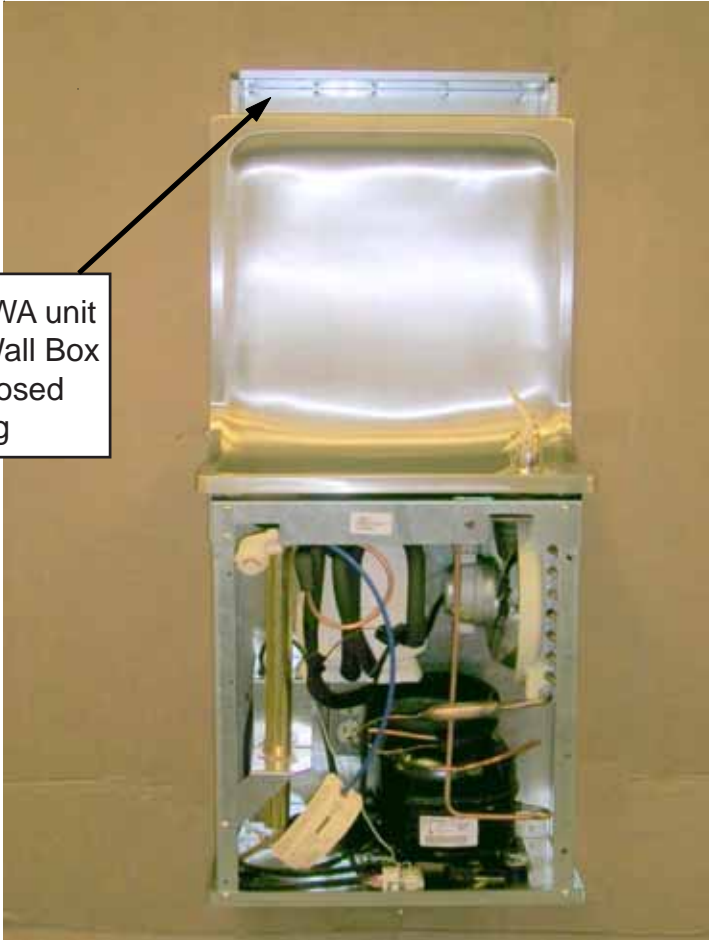


ESRC / ESWA Details

ESRC Wall Box



Installing ESWA unit onto ESRC Wall Box leaves exposed opening



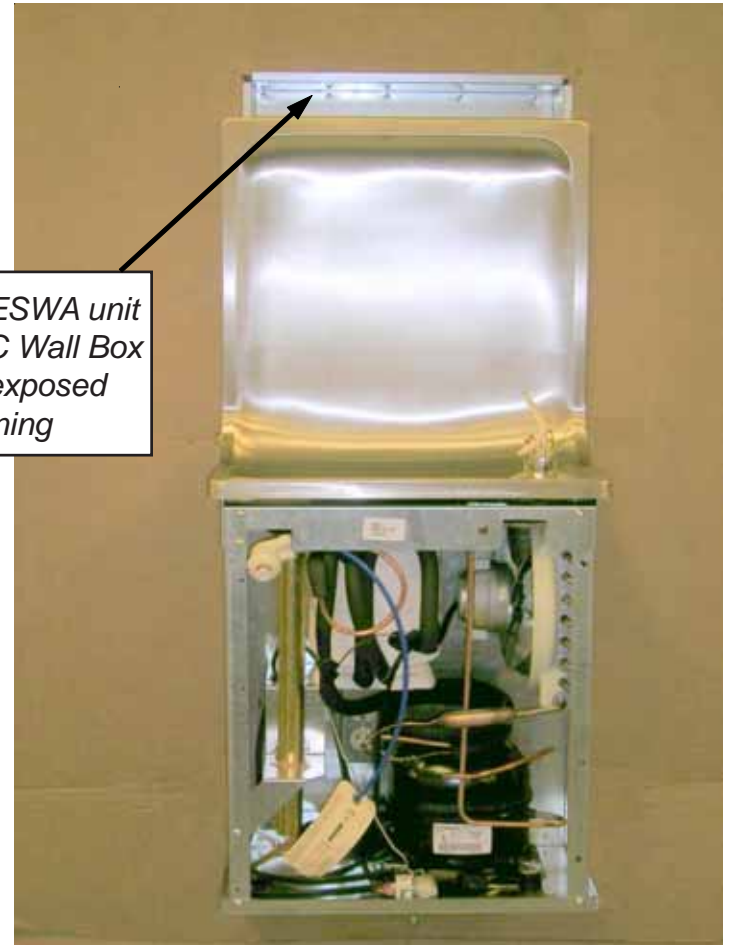
ESRC / ESWA Details

Two options are available for eliminating the exposed void

Option 1: Replace ESWA basin with basin from original ESRC Unit

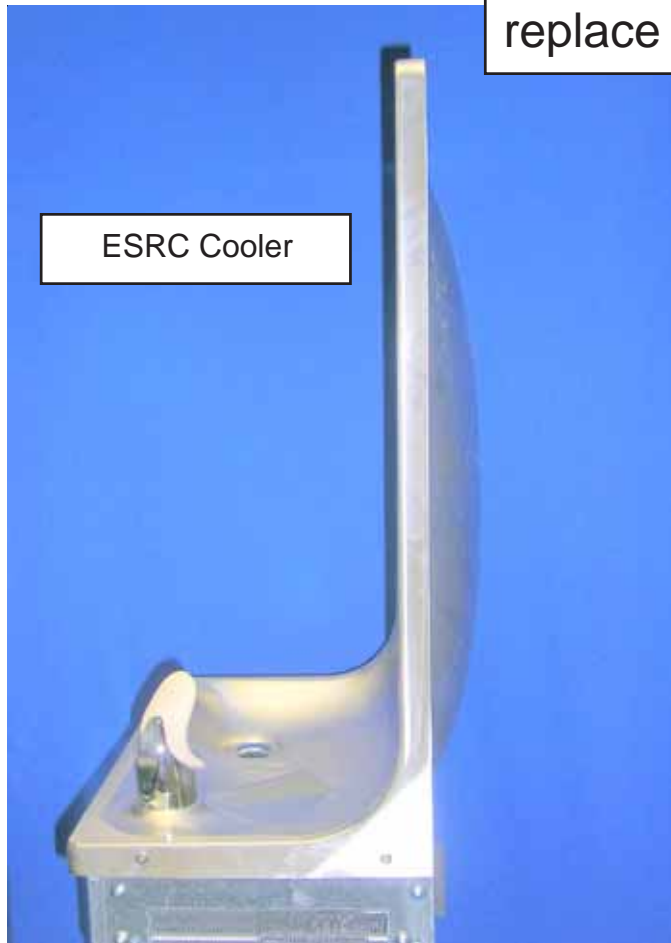
Option 2: Use 98285C Kit

Installing ESWA unit onto ESRC Wall Box leaves exposed opening



ESRC / ESWA Option 1

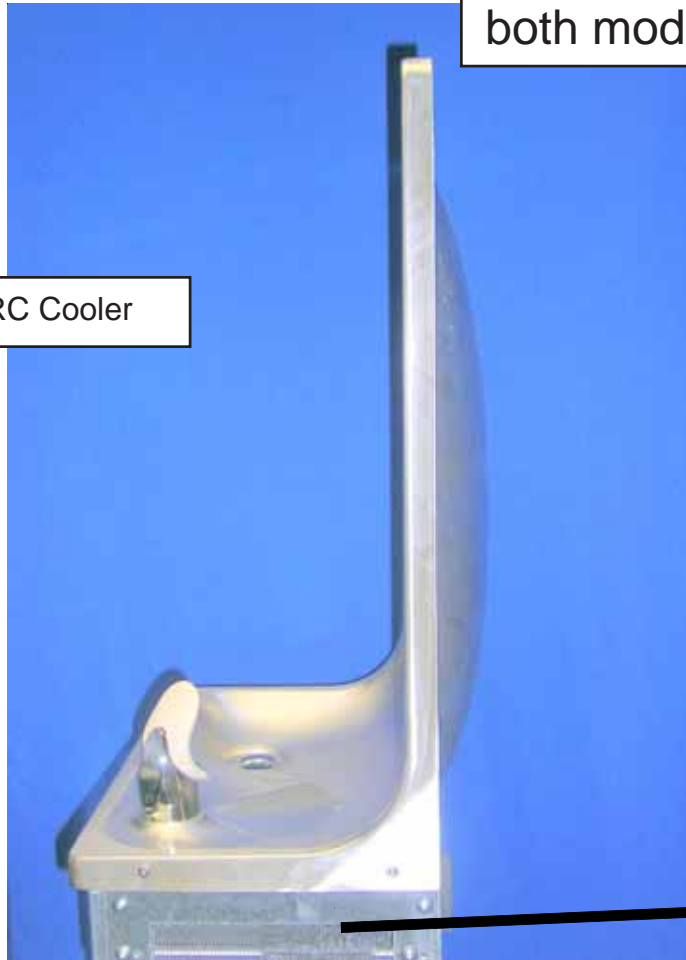
Remove basin from original ESRC unit,
replace the basin on the ESWA unit.



ESRC / ESWA Option 1

The basin mounting screw holes for both models are identical

ESRC Cooler



ESWA Cooler



ESRC / ESWA Option 2

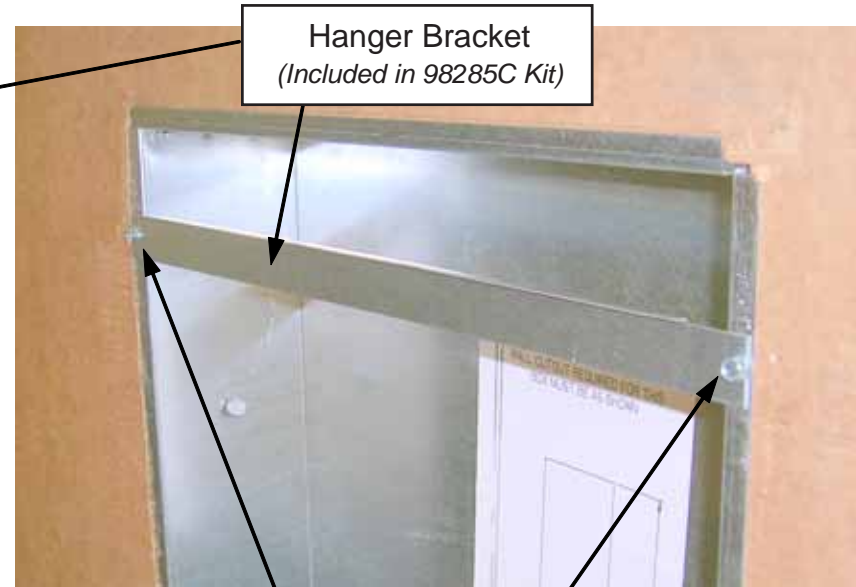
Use 98285C Kit to fill in
exposed opening

98285C Kit includes the 28698C
Stainless Steel Filler Panel



ESWA Cooler

ESRC / ESWA Option 2: *98285C Kit*



Hanger Bracket
(Included in 98285C Kit)

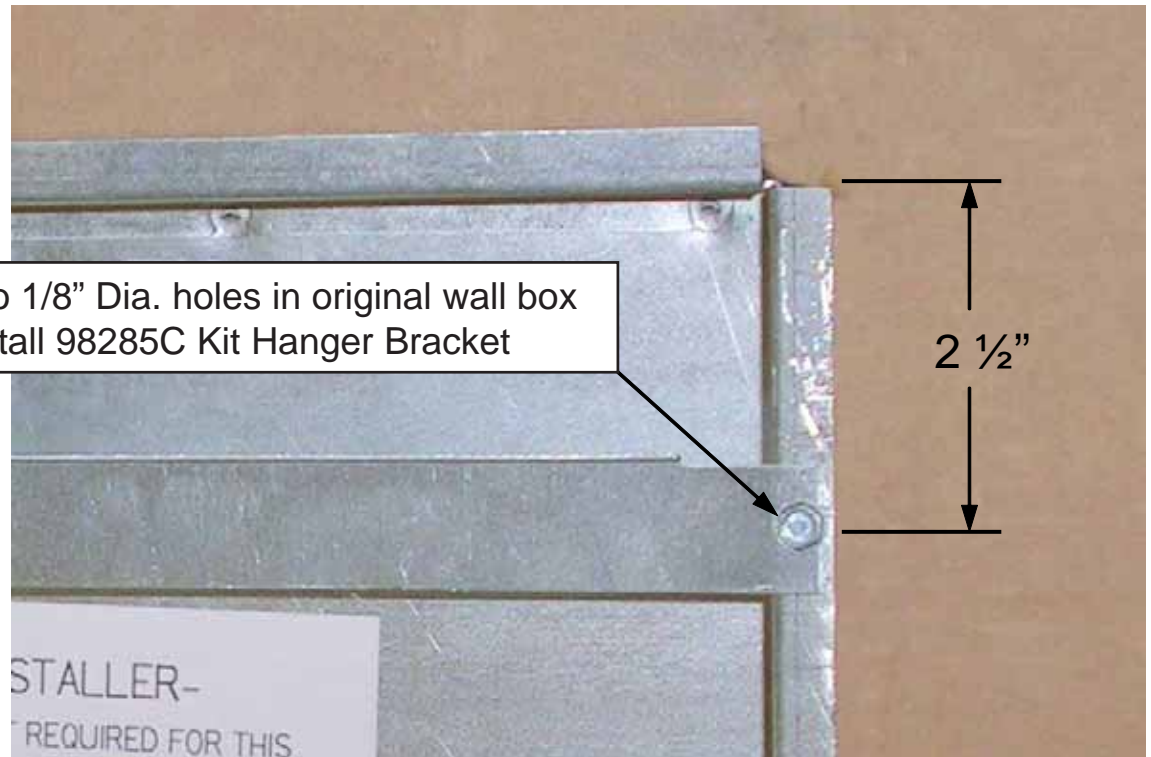
Drill two holes in original wall box and install hanger bracket

Hanger Bracket is used to hook the top of the ESWA Basin to the wall

ESRC / ESWA Option 2: 98285C Kit



Drill two 1/8" Dia. holes in original wall box
and install 98285C Kit Hanger Bracket



ESRC / ESWA Option 2:

Assemble panel to top of ESWA Unit

Install cooler and filler panel to existing wall box assembly



ESWA Cooler

REPAIR SERVICE INFORMATION TOLL FREE NUMBER 1.800.260.6640
FOR PARTS, CONTACT YOUR LOCAL DISTRIBUTOR OR CALL 1.800.323.0620
ELKAY MANUFACTURING COMPANY • 2222 CAMDEN COURT • OAK BROOK, IL 60523 • 630.574.8484

PRINTED IN U.S.A.