

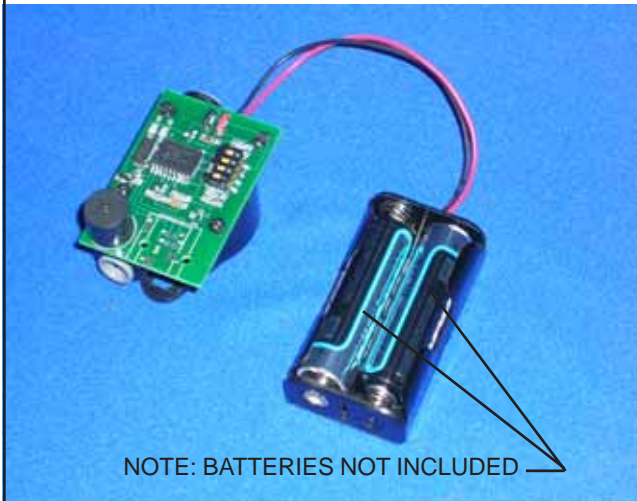
Filter Monitor Installation Instructions

This filter monitor extends the life of your filter by reliably indicating when the filter should be replaced.

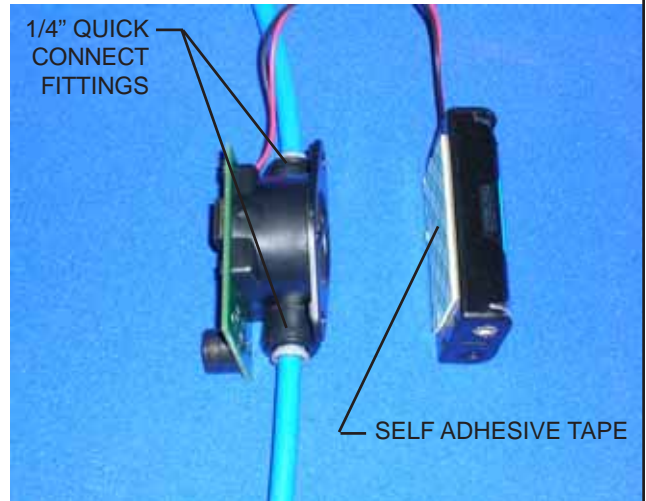
INSTALLATION:

Remove access panels to the internal portion of the cooler and locate the filter mounting head.

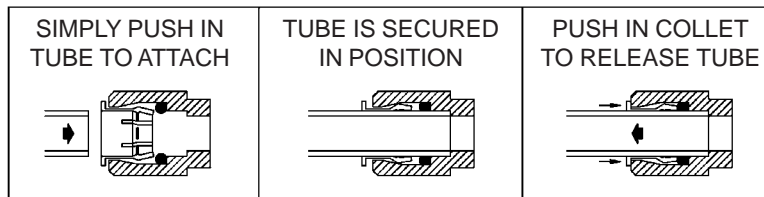
Cut a section in the 1/4 inch tubing after the filter head. Position the flow sensor in line by inserting the 1/4 inch tubing in the quick connect fittings on the inlet and outlet side approximately 5/8 inch. Use the double sided tape on the back of the battery pack to put in a secure location. The monitor itself will be supported by the water tube line.



NOTE: BATTERIES NOT INCLUDED



SEE FIGURE BELOW FOR OPERATION DETAILS OF THE FITTINGS



SIMPLY PUSH IN TUBE TO ATTACH

TUBE IS SECURED IN POSITION

PUSH IN COLLET TO RELEASE TUBE

PUSHING TUBE IN BEFORE PULLING IT OUT HELPS TO RELEASE TUBE

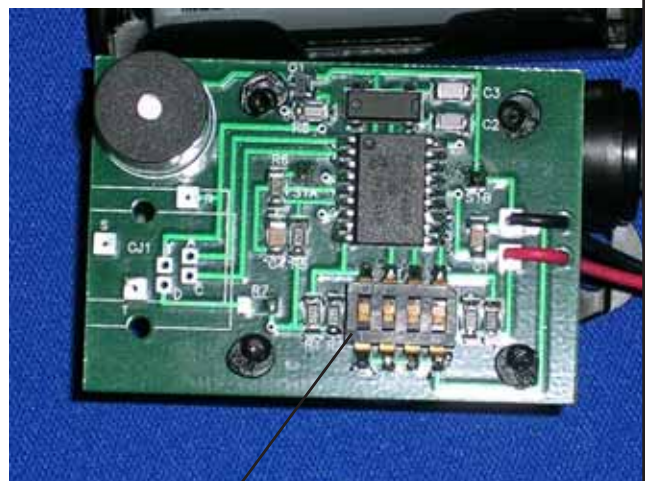
INSTALL 2 AA BATTERIES (Not Provided, please note battery polarity) **USE ALKALINE BATTERIES ONLY. YOU WILL HEAR A "BEEP" SOUND WHEN BATTERIES ARE INSERTED. THIS SIGNALS THAT THE MONITOR IS OPERATING.**

SETTING MONITOR FOR SIZE OF FILTER:

Locate the series of dipswitches 1 through 4. To set monitor for 750 gallons, all dipswitches are in "OFF" position. To set monitor for 1500 gallons put dipswitch 1 in the "ON" position and all others stay in the "OFF" position.

OPERATION OF THE MONITOR:

When a filter change is due, the monitor will beep when water is flowing. Replace the filter according to the filter installation instructions. Reset the monitor by removing a battery and reinserting (Note: It is recommended to replace the batteries when replacing the water filter). **YOU WILL HEAR A "BEEP" SOUND WHEN BATTERIES ARE REINSERTED.** Monitor is now reset.



DIPSWITCHES



Dipswitches set for 1500 gallons